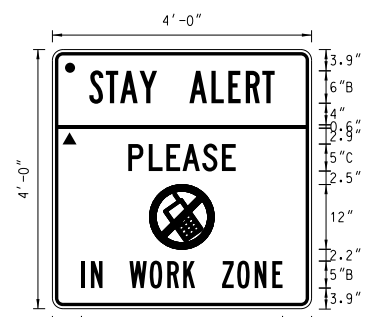
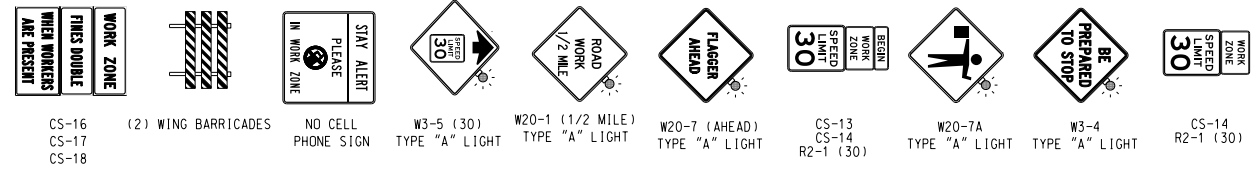
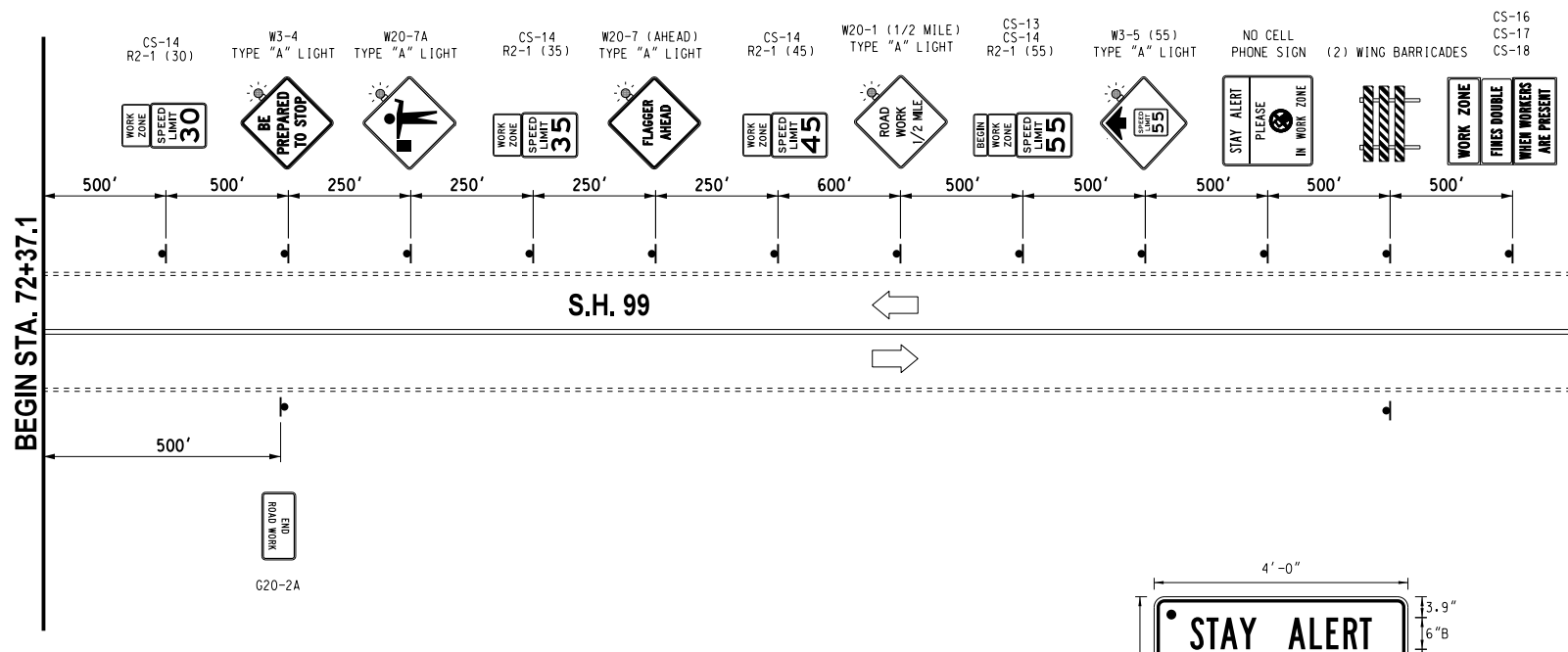
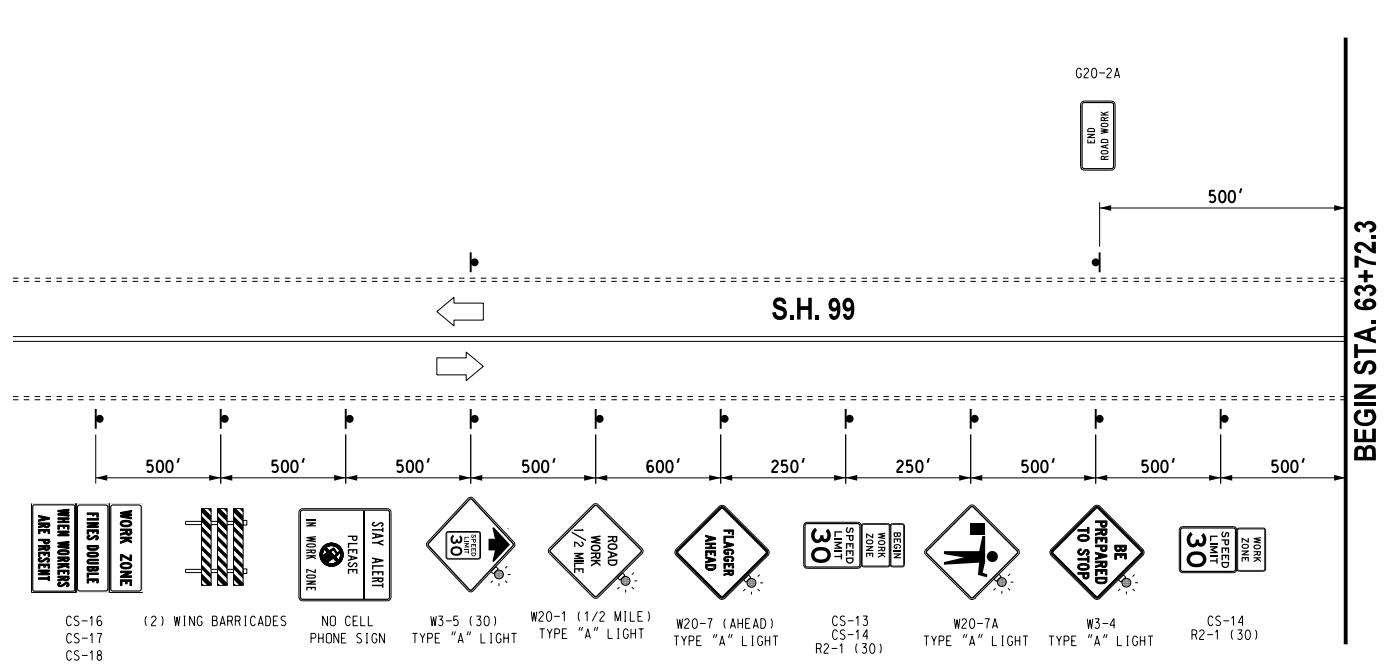


REVISIONS		
NO.	DESCRIPTION	DATE



BORDER
R=1.5"
TH=0.63"
IN=0.47"

NO CELL PHONE SIGN

- 48"X48"
- LEGEND. SYMBOL & BORDER - BLACK NON-REFLECTIVE
BACKGROUND - YELLOW REFLECTIVE
 - ▲ LEGEND. SYMBOL & BORDER - BLACK NON-REFLECTIVE
BACKGROUND - ORANGE REFLECTIVE

SUGGESTED SEQUENCE OF CONSTRUCTION

- PHASE 2. SHIFT TRAFFIC WEST TO EDGE OF SH-30 (ONE LANE EACH DIRECTION)
- PLACE PORTABLE LONGITUDINAL BARRIER ALONG EAST EDGE OF EXISTING PAVEMENT
 - CONSTRUCT TEMP. CROSS DRAINS USING FLAGMEN.
 - CONSTRUCT TEMP. ASPHALT WIDENING (C.L. SURV. SH-30 STA. 553+07 TO STA. 581+82 AND STA. 594+28 TO STA. 623+73)

Design	RWR	9/13/2016
Drawn	CCC	9/13/2016

TYPICAL ADVANCE WARNING SIGNS
PHASE 2B

State Job No. 28768(04) Sheet No. 67

9/13/2016 G:\00\Projects\1-2356 SH 30 over Salt Fork of Red River\CAD\1C PHASE 2B ADVANCE SIGNING.dgn

S.H. 30 BRIDGE & APPROACHES HARMON COUNTY